

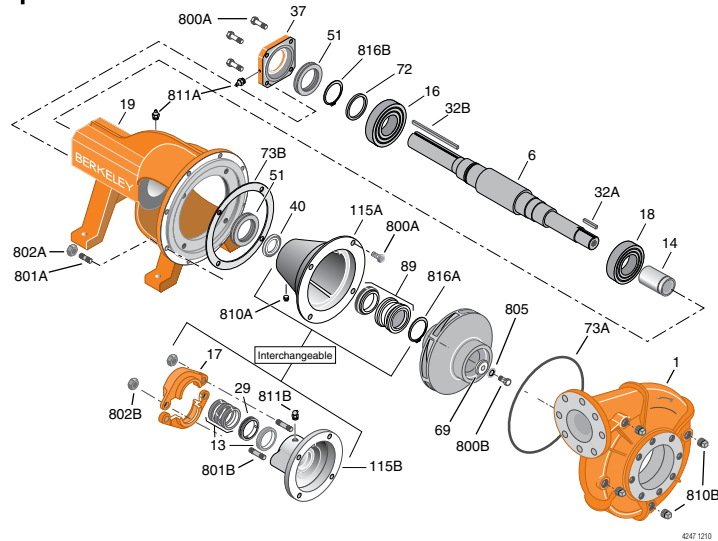
# BERKELEY®

## B6ZRH(S), B6ZRL(S)

### Cast Iron Impeller

## BEARING FRAME MOUNT

Section	FM
Page	265.1
Date	March 4, 2013
Supersedes 07/01/11	



### B6ZR Common Parts Groups Repair Parts List

Item No.	Part Description	Part Number
1	Volute Case, CW Flanged	H05065
6	Shaft	M12338
14	Shaft Sleeve	M12422L
16	Single Row Ball Bearing	S13395
18	Ball Bearing	S13397
19	Bracket	M12332
32A	Shaft Key, 1/4" Sq. x 2-1/4" Lg. - Impeller	S23677
32B	Shaft Key, 3/8" Sq. x 2-1/4" Lg.	S23941
37	Bearing Cap	M12335
40	Water Slinger	S10964
51	Grease Seal (2 Req.)	M12337
69	Lock Washer	S06319
72	Thrust Ring	S06519
37	Outer Bearing Cap Assembly*	S19914
40	Slinger, Water	S12260
69	Washer, Impeller	S06314
73	O-Ring (See Note 1)	M14943
73B	Balance Ring Gasket	S09943
800A	3/8-16x1" Lg. Hex Hd Capscrew (8 Req.)	S26826
800B	Impeller Capscrew B6ZRL(S)	S23619
800B	Impeller Capscrew B6ZRH(S)	S23631
801A	3/8-16 x 1-1/2" Lg. Stud (8 Req.)	S23995
802A	3/8-16 Hex Nut (8 Req.)	S23103
805	Impeller Lock Washer	S23083
810B	1/2" NPT Square Hd. Pipe Plug (3 Req.)	S23717

Item No.	Part Description	Part Number
811A	Grease Fitting (2 Req.)	S23700
816B	External Retaining Ring	S23016

### Packing Components

Item No.	Part Description	Part Number
13	Packing Ring Set	S13435
17	Split Packing Gland Set	B82470
29	Lantern Ring	S19200
115B	Packing Housing	M12334
801B	3/8-16NC x 2-1/2" Lg Stud (2 Req.)	S04438
802B	3/8-16 Hex Nut (2 Req.)	S23343
811B	1/8 MPT x 90° Grease Fitting	S23702

### Seal Components

Item No.	Part Description	Part Number
89	1-3/4" Mechanical Shaft Seal	S32015
115A	Mechanical Seal Housing	M12333
810A	1/8" NPT Sq. Hd. Pipe Plug	S23714
816A	External Retaining Ring	S16767

**NOTE 1:** Also accepts gasket **S05126** as replacement for O-Ring. See **Supplement E** located at the beginning of this section.

Refer to following page for model specific repair parts listing.



**BERKELEY®**

B6ZRH(S), B6ZRL(S)

Cast Iron Impeller

BEARING FRAME MOUNT

Section	FM
Page	265.2
Date	March 4, 2013
Supersedes 01/01/04	

**B6ZR Series 1-1/2" x 10T, SAE 4 & 5**

Pump Series	Catalog Number	Rotation	Style	Impeller	Impeller Material	Replacement Shaft Kit
<b>B6ZRL</b>	B80431	CW	Suction Flange 8" x 13-1/2" B59878 Discharge Flange 6" x 11" B59872	M04348	Cast Iron	B81663
<b>B6ZRLS</b>	B80432	CW				
<b>B6ZRH</b>	B80433	CW				
<b>B6ZRHS</b>	B80434	CW		M04349		